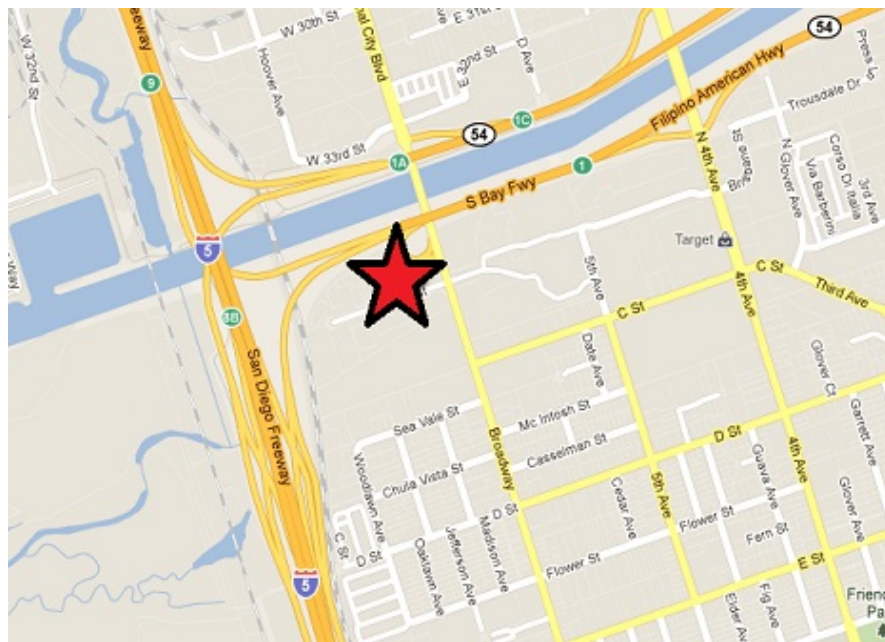


# REGENCY INDUSTRIAL PARK

100-W-35th- H  
National City, CA 91950



3432 sq. ft.  
W/mezzanine



Rate: \$ 1.50/foot  
\$5,148/month industrial  
gross

Term: 1-3 year lease

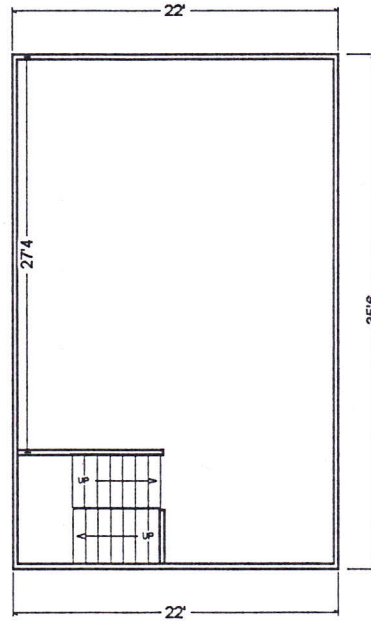
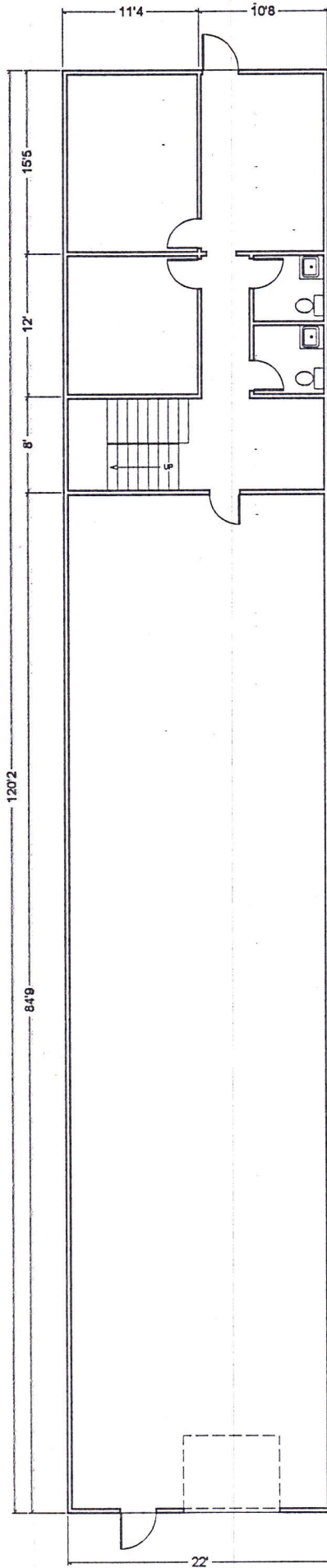
Available: 12/01/2024

Description: Reception, 2  
private offices, large  
warehouse w/18' ceilings,  
open 2nd floor work area,  
two restrooms, grade level  
10x12 truck door, a/c in  
offices.

For more information call:

**858.272.7070**

Joan Barnes



100 W. 35th St., Suite H  
National City, CA 91950

Approx. 3432 sqft.