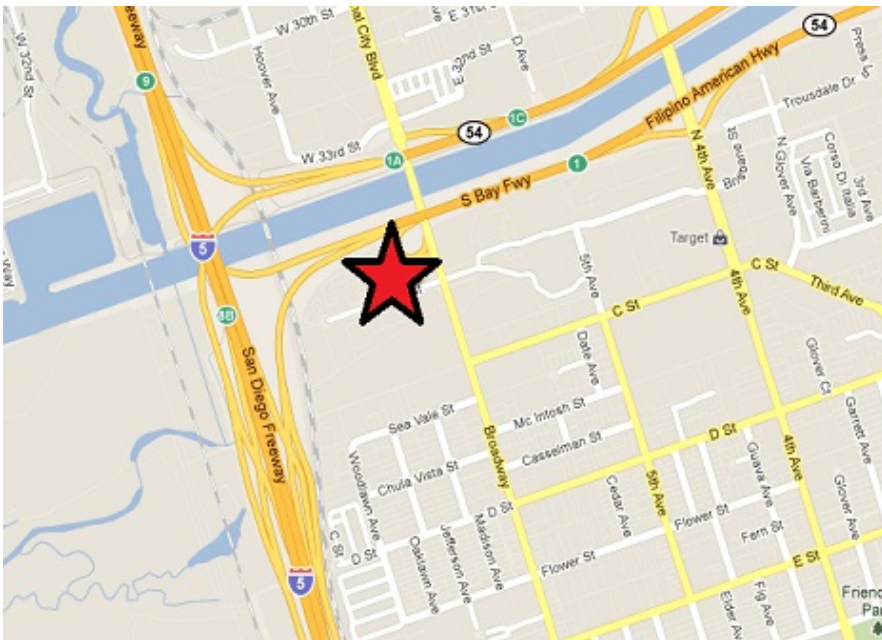


REGENCY INDUSTRIAL PARK

100-W-35th- H
National City, CA 91950



3432 sq. ft.
W/mezzanine



Rate: \$ 1.50/foot
\$5,148/month industrial
gross

Term: 1-3 year lease

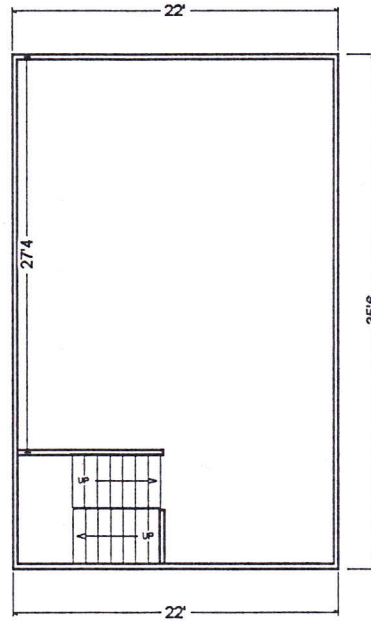
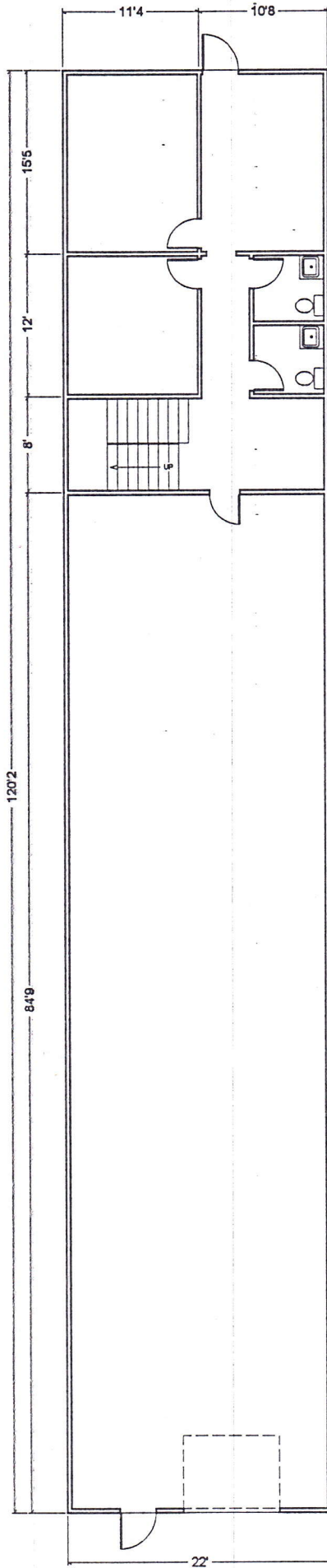
Available: 4/15/2024

Description: Reception, 2
private offices, large
warehouse w/18' ceilings,
open 2nd floor work area,
two restrooms, grade level
10x12 truck door, a/c in
offices.

For more information call:

858.272.7070

Joan Barnes



100 W. 35th St., Suite H
National City, CA 91950

Approx. 3432 sqft.