

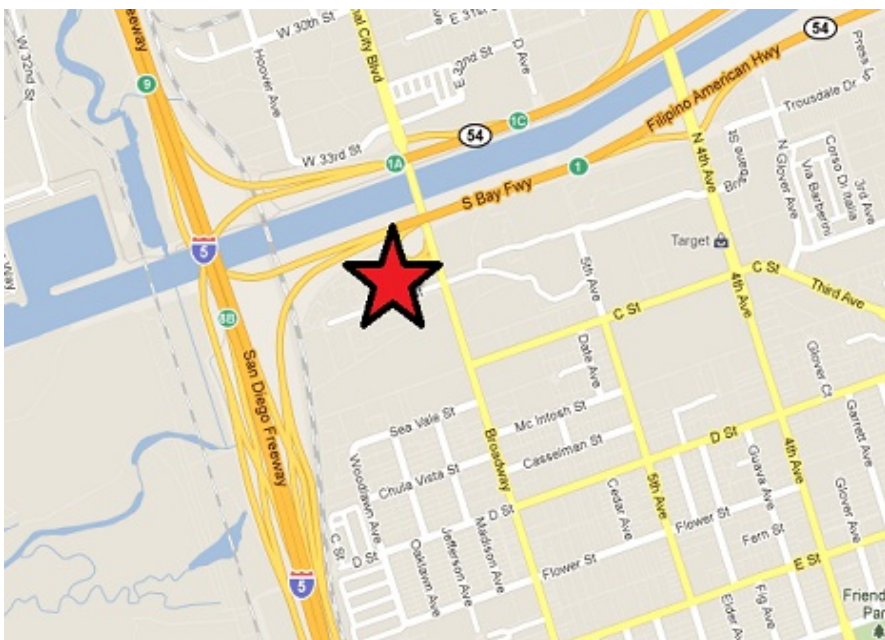
REGENCY INDUSTRIAL PARK

100 West 35th Suite S
National City, CA 91950



3410 sf

Office/Warehouse Space



Rate: \$.73 Ind. Gross

Term: 1-3 years

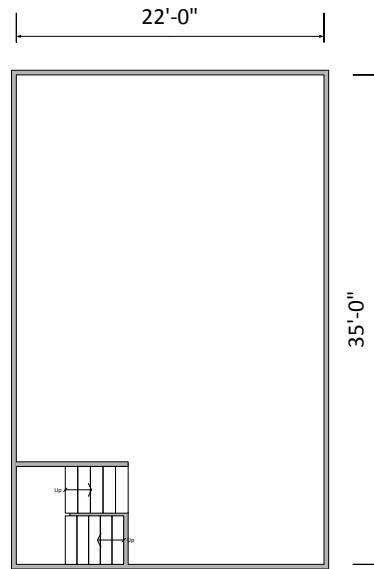
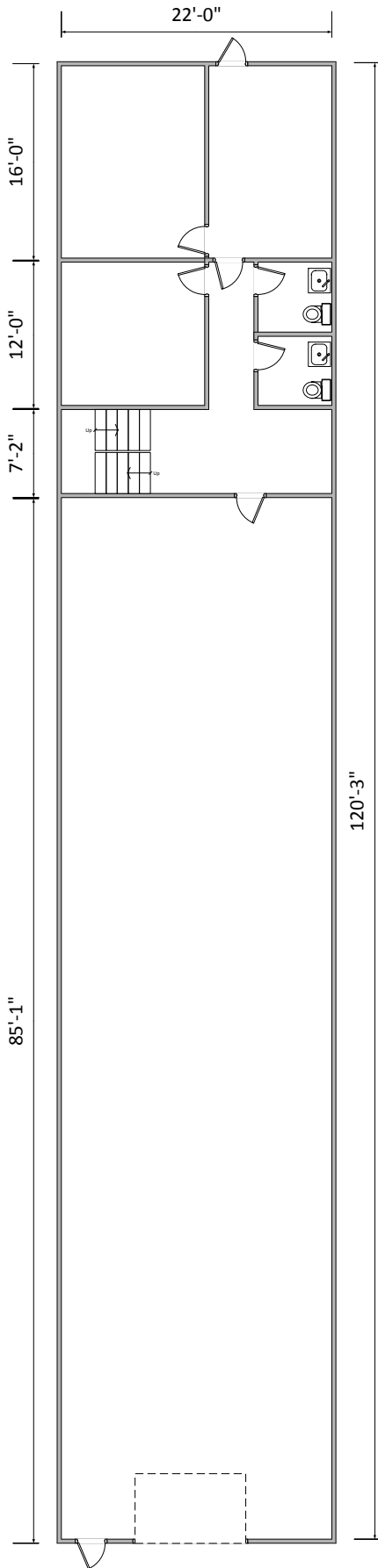
Available: Immediately

Description: Reception area, two offices, upstairs office mezzanine and warehouse with grade level truck door, HVAC in offices.

For more information call:

858.272.7070

Joan Barnes



100 W. 35th St., Ste. S
National City, CA 91950



Joan Barnes (858) 272-7070