

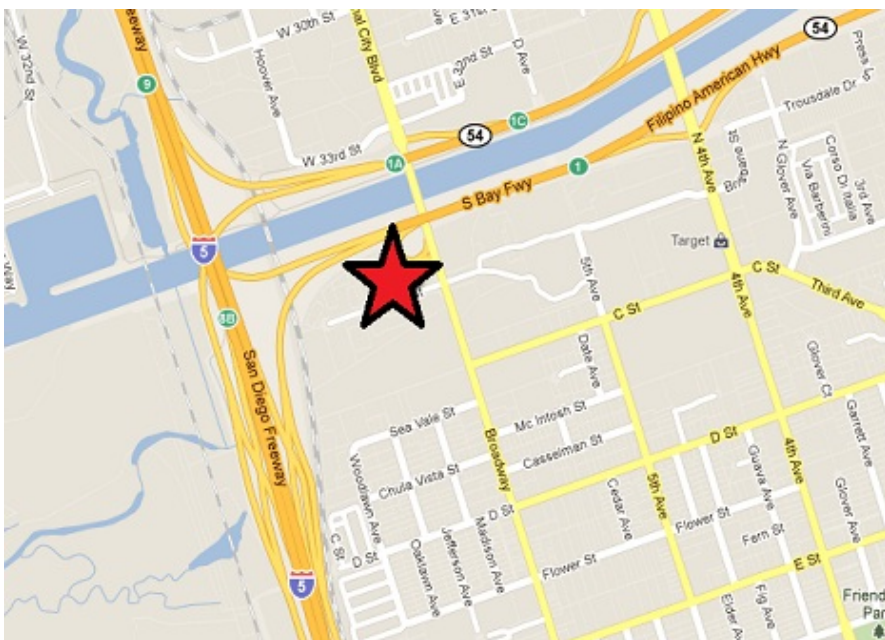
REGENCY INDUSTRIAL PARK

100 West 35th Stes L & M
National City, CA 91950



5350 sf

Office/Warehouse Space



Rate: \$.73 Ind. Gross

Term: 1-5 years

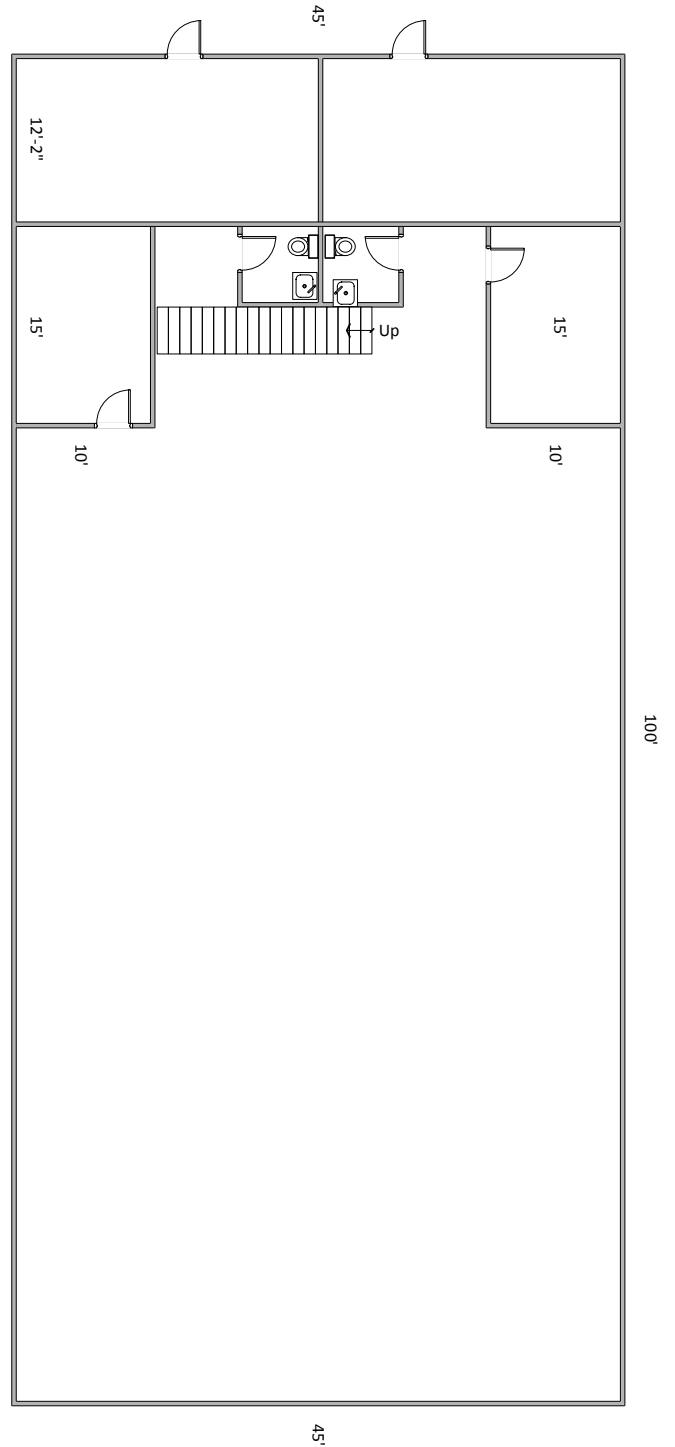
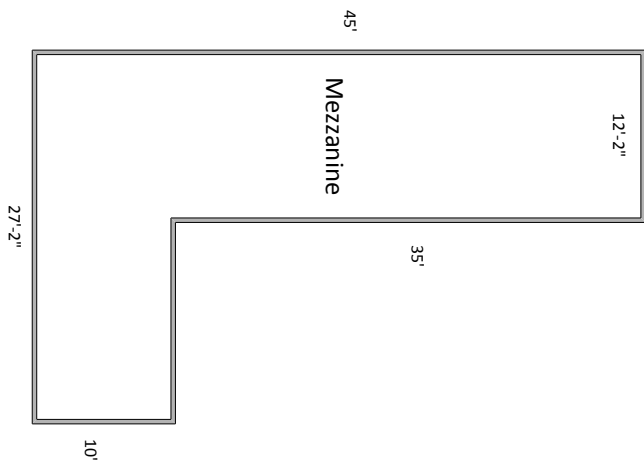
Available: 30 day notice

Description: Two large front offices, two storeroom offices, two restrooms, open 850 sf mezzanine, large open warehouse with two grade level truck doors. Easy access to I-5 and I-54.

For more information call:

858.272.7070

Joan Barnes



100 W. 35th St., Suites L & M – 5350 SF



Joan Barnes – (858) 272-7070